

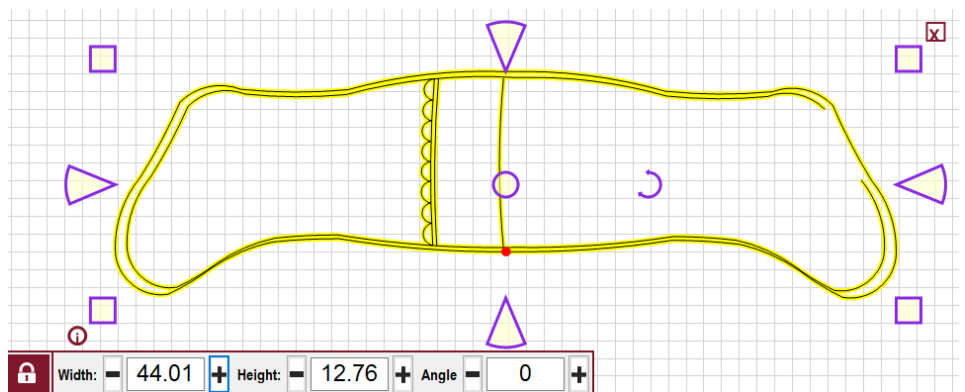
## Instructions for Sweet Dreams Christmas Stockings using outlines, fillers, and adding a name

Load muslin (or throwaway, won't show fabric), batting and the stocking fabric onto the longarm. The stocking fabric will be the fabric that will show on the front.

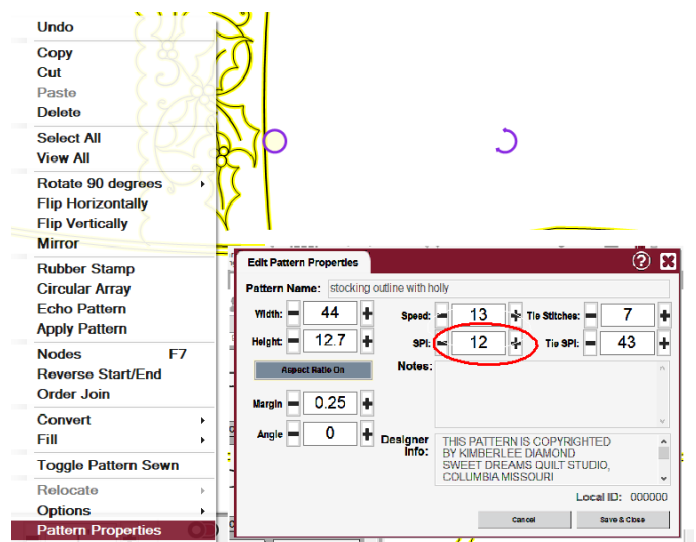
Using Statler Creative Studio™ Software, make a boundary around the fabric so that you know how wide and where it is. Add the stocking outline pattern(s) and filler(s) to your project.



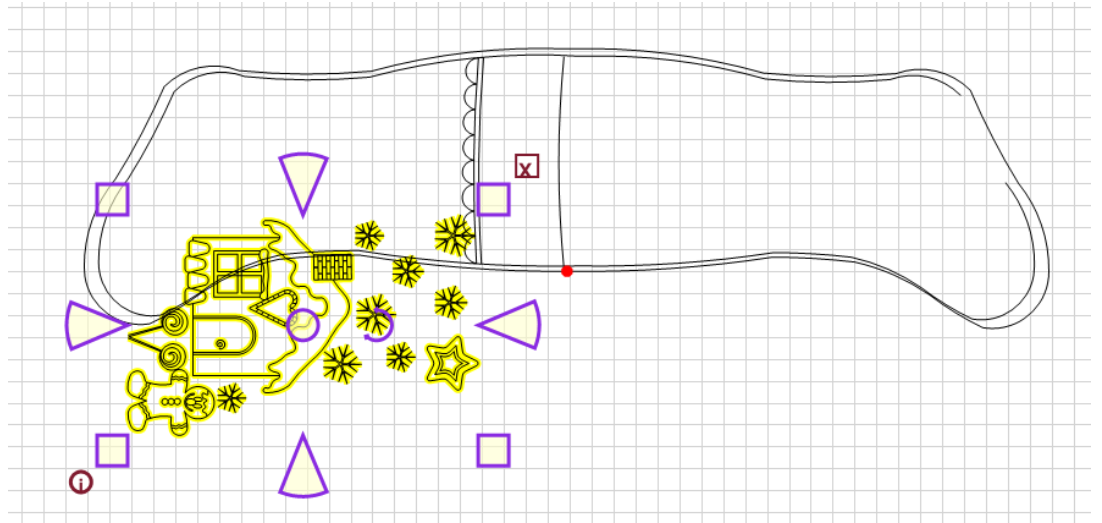
Drag the stocking outline on the CAD screen. **Do not use pattern to boundary!**



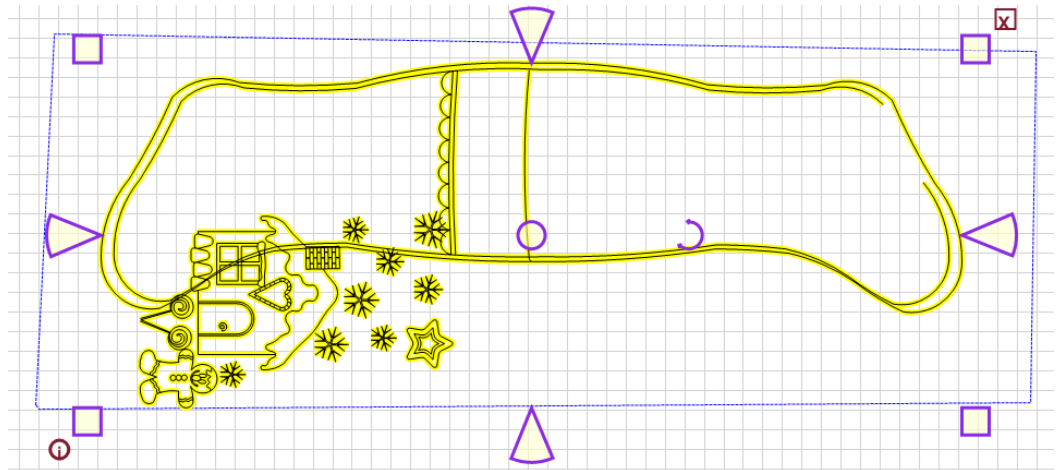
Change spi for pattern to 14 – 16, right click on pattern, click pattern properties or click the p key on keyboard.



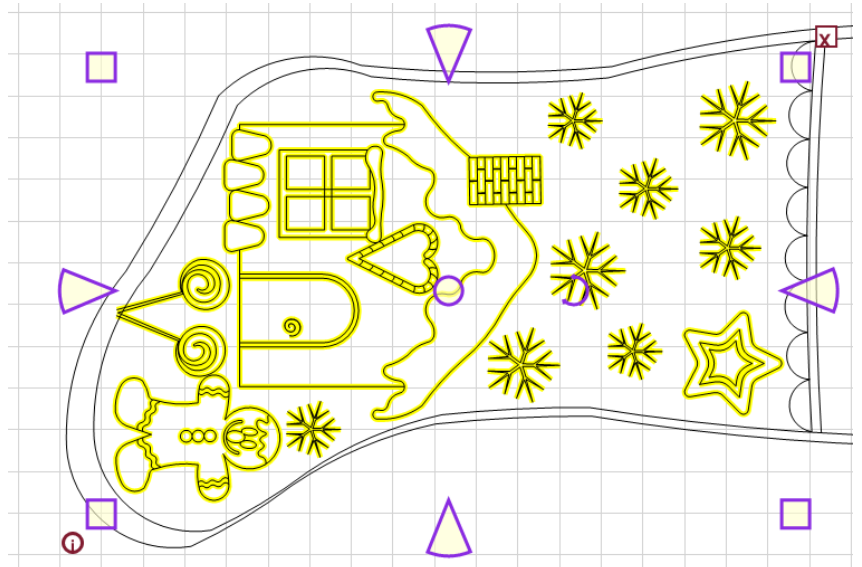
Now drag the filler pattern on the CAD screen.



Select both patterns and move them into the boundary area. If you want (need) to enlarge or reduce be sure and enlarge or reduce both patterns at the same time so that they stay proportional.



Now you need to move the filler pattern into the proper position on the outline.

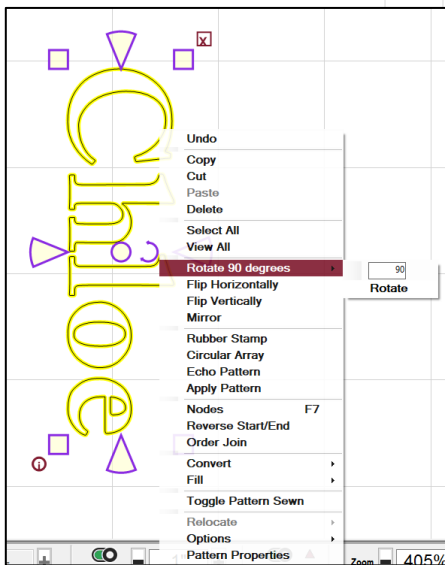
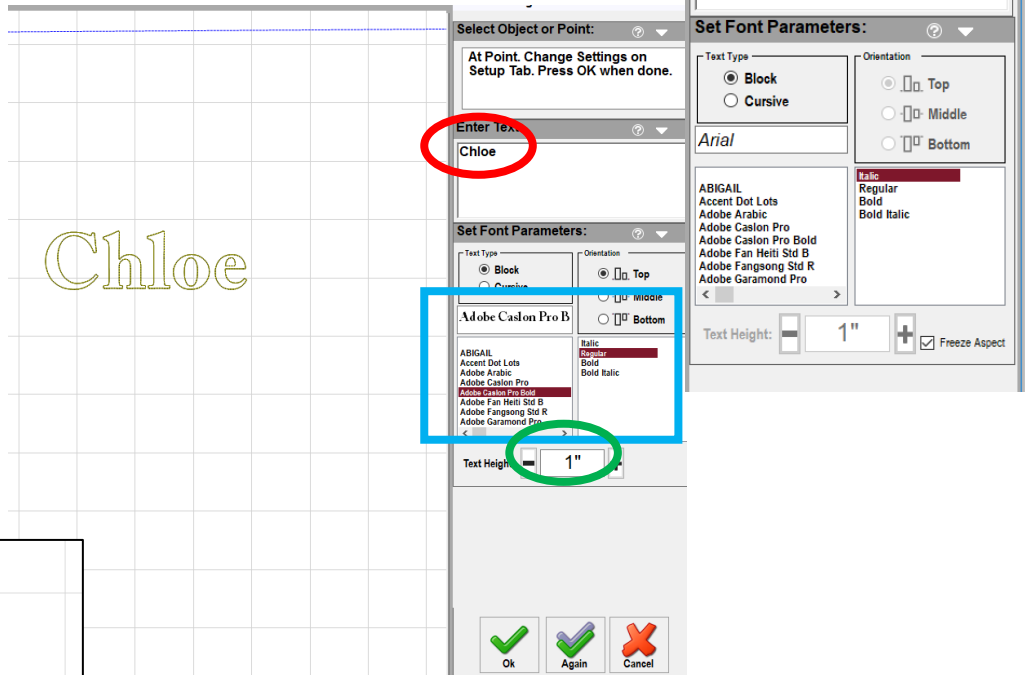


Now we want to add the name to the stocking. Click the Draw Text icon



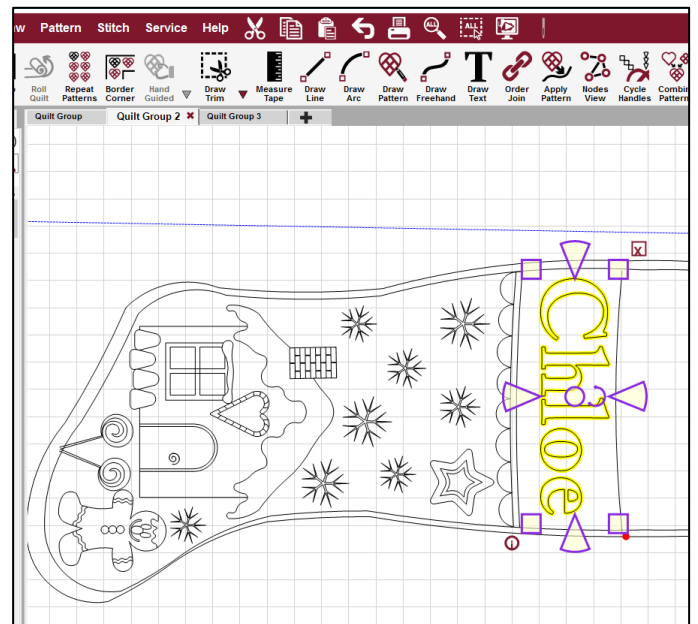
This menu will appear on right hand side of screen:

Click somewhere on an empty spot on the CAD screen, **type in your text**. Your text will appear as you type. Once you've finished, **select your font**. Look closely at your text, make sure the font that is drawn well, smooth, no jagged edges, no overlap. I don't bother **setting a size**, I just make it fit later.



Once you have the name looking the way you want it is time to put it on the stocking. We are going to need to rotate the text 270 degrees. The easiest way is to rotate 90 degree 3 times.

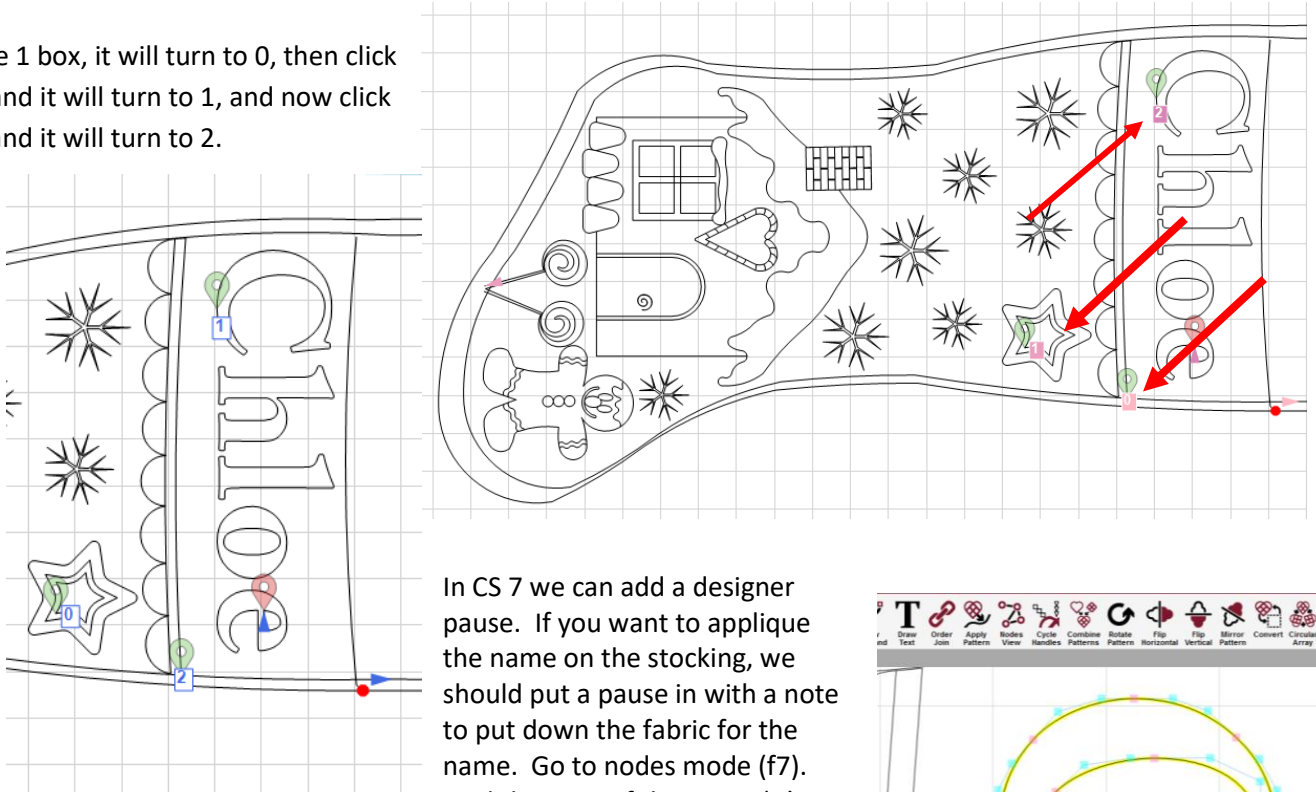
Now drag the name to the stocking cuff and adjust the size to the cuff.



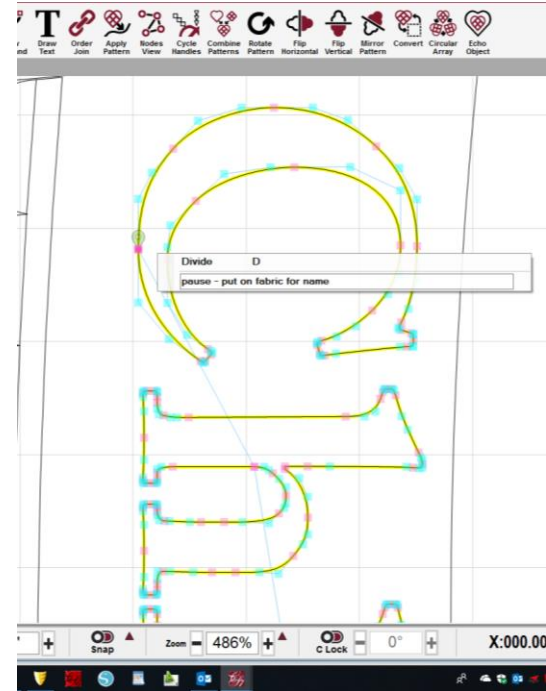
Now we need to change the sewing order. We want to sew the filler first, then the name, and finally the outline. Click F4 to change sew order. See 0 is near the start, 1 is near the star on the filler, and 2 is on the name?

Click on the 1 box, it will turn to 0, then click the 2 box and it will turn to 1, and now click the 0 box and it will turn to 2.

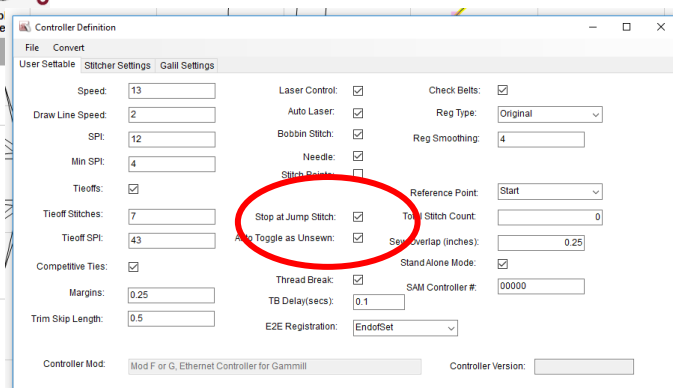
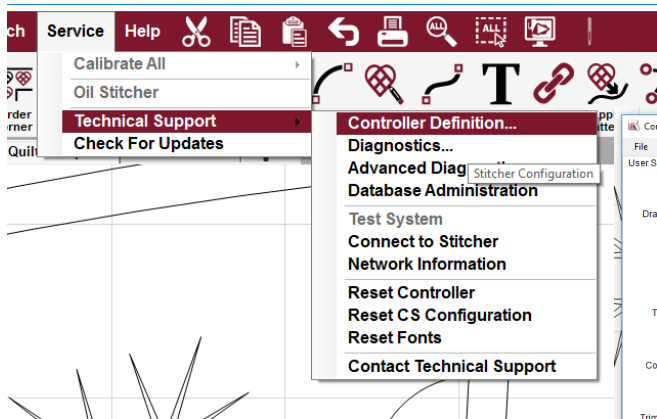
Click F4 again to set the changes. And you are ready to quilt.



In CS 7 we can add a designer pause. If you want to apply the name on the stocking, we should put a pause in with a note to put down the fabric for the name. Go to nodes mode (f7). Find the start of the name (it's where the green marker is on the word Chloe). Right click on the pink node where the pattern starts. In the box below the word divide, type pause and then any message you want. I typed pause – put on fabric for name. When you hit enter, a stop sign will appear on the screen at that point.



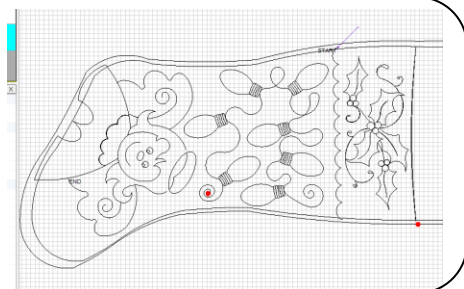
Make sure your "Stop at Jump Stitches" is turned on.



The filler portion will quilt first, then it will move and quilt the outside of the outline and the cuff design.

It will then pause. At this pause you need to load back of the stocking fabric, right side down, over the entire stocking. Hit OK and it will quilt the interior outline.

NOTE: On the face fillers, the string of Christmas lights will quilt first and then the machine will pause and allow you to change thread color before quilting the faces.



After it's all done trim away the excess fabric, turn the stocking through the opening in the toe. You can stitch the opening closed at this point if you want. Now grab the toe portion that isn't quilted and stuff it down into the toe portion that is quilted. Add a hanging loop and you are done!

Using this method creates a stocking that has all the quilted fabric at the front and 2 layers of backing fabric on the back.